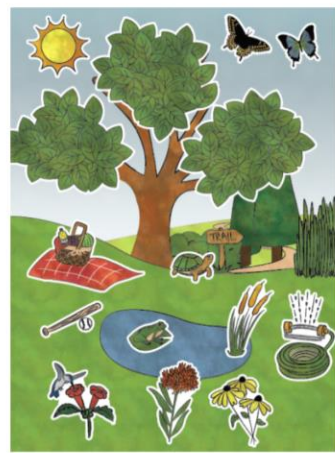
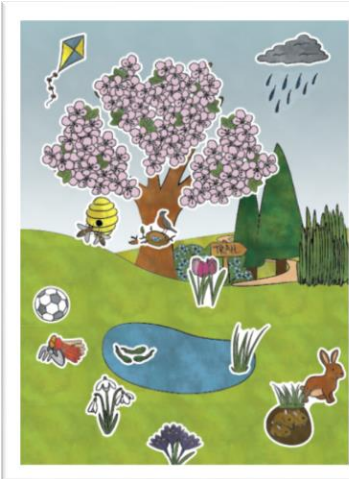


# Seasonal Snapshot

## PROGRAM OVERVIEW



## Objectives

### NGSS/MLS Standards for K-2:

- PS3.A - Definitions of Energy
- LS1.C -- Organization for matter and energy flow in organisms
- ESS1.B - Earth and the Solar System
- ESS2.D - Weather and climate

### MO Early Learning Standards

#### I. Physical Science

A. Explore, Investigate and Solve Problems of the Physical World

#### II. Life Science

A. Explore, Investigate and Solve Problems of Living Things

#### III. Earth Science

A. Explore, Investigate and Solve Problems of the Earth and Sky



## About the Program

Designed for students in Kindergarten through 2<sup>nd</sup> Grade, the Seasonal Snapshot program invites children to explore the changes in weather that characterize our four seasons, and the effects these changes have on plants, animals and our own activities. During this program, students will:

- **Discuss the four seasons** (spring, summer, autumn and winter), why they occur, and what behaviors and weather we associate with each.
- **Participate in the creation of a seasonal story scene** (shown above), during which a given landscape changes with the seasons.
- **Explore the Linnean House area** in small groups led by one of our instructors to observe ways in which seasons impact the Missouri Botanical Garden's collections, practices and scientific study.
- **Plant a seed** to take home or to the classroom to observe as it grows.

### *What is Phenology?*

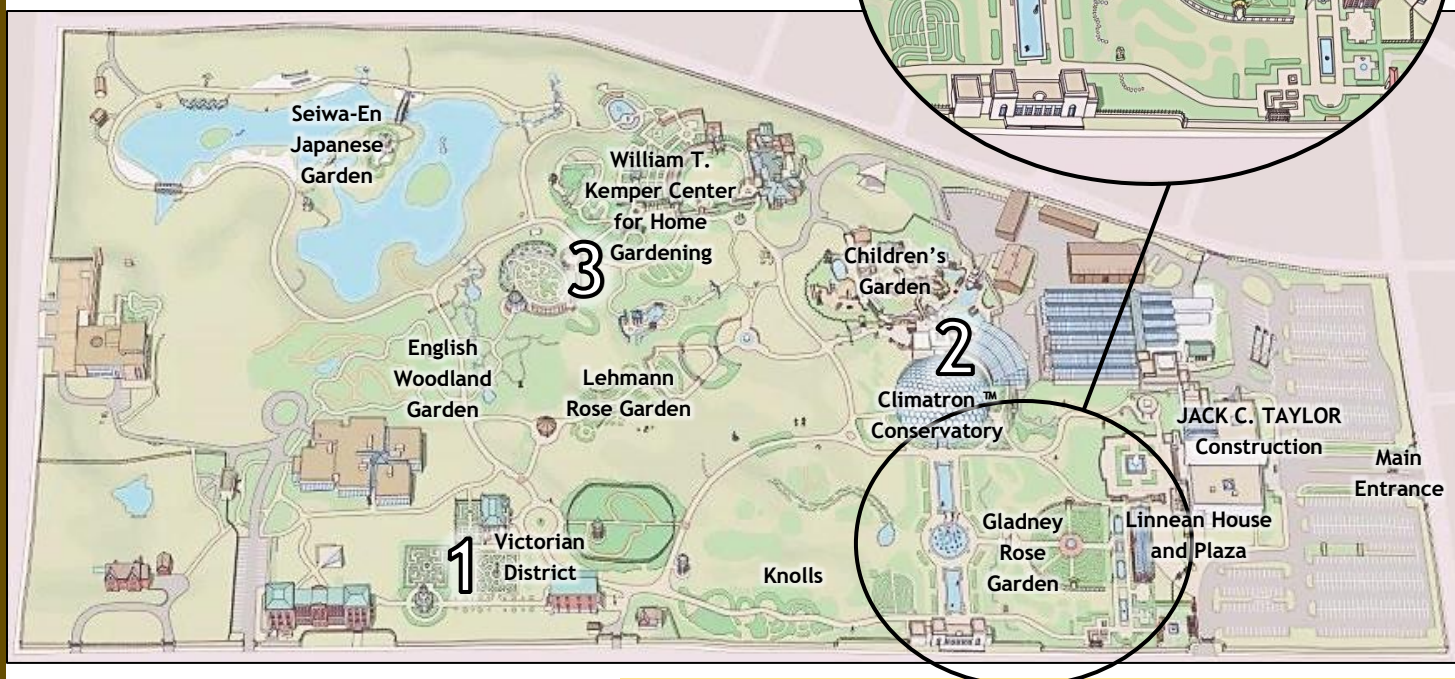
*Phenology describes the study of life cycles and the timing of seasonal phenomena as they are observed throughout the year. Phenologists record the dates when flowers bloom, when trees produce their first spring leaves and turn color in the fall, the first sightings of migrating birds and insects, changes in plumage and behavior, and even the appearance of eggs and young. These data give scientists an idea of how year to year fluctuations in temperature and precipitation affect the plants and animals around us.*

*Phenology study is a great way to introduce observation and data collection to young students. Consider building upon the Seasonal Snapshot program by observing a tree or flowering plant in your school yard throughout the year.*

# This Program Features:

## The Linnean House, Gladney Rose Garden and Central Axis

The northeast region of the Missouri Botanical Garden includes the Linnean House, the Gladney Rose Garden, the Ottoman Garden, the Sensory Garden, the Bulb Gardens, Hosta gardens and the Central Axis. (Please note that the Climatron™ Conservatory is not included in this program so make sure to figure in this time factor if the Climatron™ is a “must see” stop during your visit.) These regions were selected to highlight those areas that exhibit seasonal changes and offer opportunities to discuss the strategies and practices used to design gardens and protect the health of our plants throughout the year.



### Other Places to Explore...

Make the most of your visit by taking your students to explore the following areas after your program:

1. **The Climatron™** - Take a walk through the Garden's own tropical rainforest in the Climatron™ conservatory!
2. **The Kemper Center** - This 8-acre complex includes 23 demonstration gardens, including a vegetable garden, a bird garden, native gardens, gardens for butterflies and even a garden for children!
3. **The Victorian District** - Enjoy a walk around the ornate Victorian gardens. Henry Shaw's country home and the Kaiser Maze are also located in the Victorian District, however, both are closed during this time.

### Logistics for Teachers

- ✿ Each Seasonal Snapshot program lasts 75 minutes on Garden grounds and 30-45 minutes for pre- and post- activities (prior to and after visiting the Garden). This program serves a maximum of 60 students.
- ✿ Up to two programs may be booked on the same day at the same time, pending availability.
- ✿ Program fees include admission for up to six adults per 30 students. (Additional adults will be charged normal admission rates.) Please try to bring at least one adult for every five students.
- ✿ Groups booking this program may eat lunch in their assigned program space if they wish. (Please note that picnicking on the Garden's grounds is prohibited.)
- ✿ Program availability is limited! Book early!

For more information or to book this program, please visit [www.mobot.org/schoolprograms](http://www.mobot.org/schoolprograms) or call the School Programs office at 314-577-5185.